



LEGEND

(XX) - DENOTES HEADER TYPE. SEE THIS SHEET FOR SCHEDULE.

BUILDER NOTE

THE ENGINEERING FOR THIS CONSTRUCTION DOCUMENT HAS BEEN PREPARED W/ THE ROOFING MATERIAL AS: SHINGLE

WALL LEGEND

10'-0" EXTERIOR BEARING
10'-0" INTERIOR BEARING

OPENING PRESSURES 115 MPH, EXP B

OPENING SQ. FT.	MID ZONE		END ZONE	
	+W	-W	+W	-W
0-19.9999	+14.28	-15.48	+14.28	-19.14
20-49.9999	+13.62	-14.82	+13.62	-17.82
50-99.9999	+12.78	-13.98	+12.78	-16.14
100 & >	+12.12	-13.32	+12.12	-14.82

* DENOTES PRESSURES CALCULATED FOR DOOR PARTIALLY IN END ZONE

FRAMING NOTES 115 EXP. B
ULTIMATE DESIGN WIND SPEED

REFER TO GENERAL NOTES FOR GENERAL FRAMING REQUIREMENTS U.N.O. ON DRAWINGS

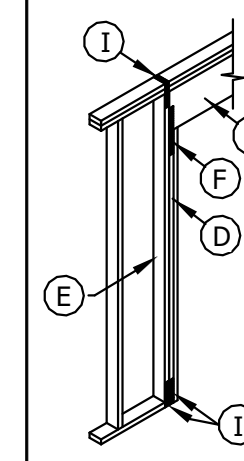
2X4 SPF#2 AT 16" C/C

FLOOR FRAMING NOTES:

- ALL FLOOR JOISTS ARE 2X12 @ 19.2" C/C U.N.O.
- PROVIDE 3/4" T&G APA RATED PLYWOOD SUBFLOOR
- SPACE JOISTS UNDER CERAMIC TILE/MARBLE FLOOR FINISHES @ 16" C/C MAX.
- PROVIDE PI AT EACH END OF MULTI-PLY JOISTS U.N.O.
- WHERE MASONRY VENEER IS SUPPORTED BY WOOD CONSTRUCTION THAT ADJOINS MASONRY VENEER SUPPORTED BY THE FOUNDATION, PROVIDE A MOVEMENT JOINT BETWEEN THE VENEER SUPPORTED BY THE WOOD CONSTRUCTION AND THE FOUNDATION.
- ALL MULTI-PLY JACKS AND STUDS TO BE GLUED AND NAILED W/ 16d NAILS @ 6" C/C ONE PLY TO ANOTHER, TYPICAL.
- ALL WINDOW HEADERS 2-2X12 W/ 2-JACKS & 2-STUDS @ EACH END U.N.O ON PLAN.
- WHERE SINGLE-PLY LVL BEAM IS USED, SUPPORT JOISTS W/ TOP FLANGE HANGERS CAPABLE SUPPORTING THE JOIST REACTION.
- ALL POST AND MULTIPLE STUD SHALL BE RUN CONTINUOUSLY TO SOLID BEARING ON FOUNDATION WALL OR BEAMS. PROVIDE SOLID BLOCKING AT FLOOR DIAPHRAGM & COLUMN ABOVE AND BELOW.
- PROVIDE CONTINUOUS SHEATHING AT LEAST ONE SIDE OF BEARING STUD WALLS IN THE BASEMENT OR ATTIC SPACE
- ALL POST AND MULTIPLE STUD SHALL BE RUN CONTINUOUSLY TO SOLID BEARING ON FOUNDATION WALL OR BEAMS. PROVIDE SOLID BLOCKING AT FLOOR DIAPHRAGM @ COLUMN ABOVE AND BELOW

HEADER SCHEDULE LEGEND

A	HEADER IDENTIFICATION MARK	(HXX)
B	NUMBER OF PLYS REQUIRED	
C	**HEADER SIZE	
D	NUMBER OF JACK/TRIMMER STUDS AT EACH END	
E	NUMBER OF KING/FULL LENGTH STUDS AT EACH END	
F	TYPE HEADER STRAP REQUIRED	
G	NUMBER OF JACK STUDS STRAPPED AT EACH END	
H	NUMBER OF FULL LENGTH STUDS STRAPPED AT EA. END	
I	*TYPE STRAP REQUIRED AT BASE OF JACKS AND BOTH TOP AND BOTTOM OF FULL LENGTH STUDS	



* ONLY JACKS THAT ARE REQUIRED TO BE STRAPPED AT TOP NEED TO BE STRAPPED AT BOTTOM

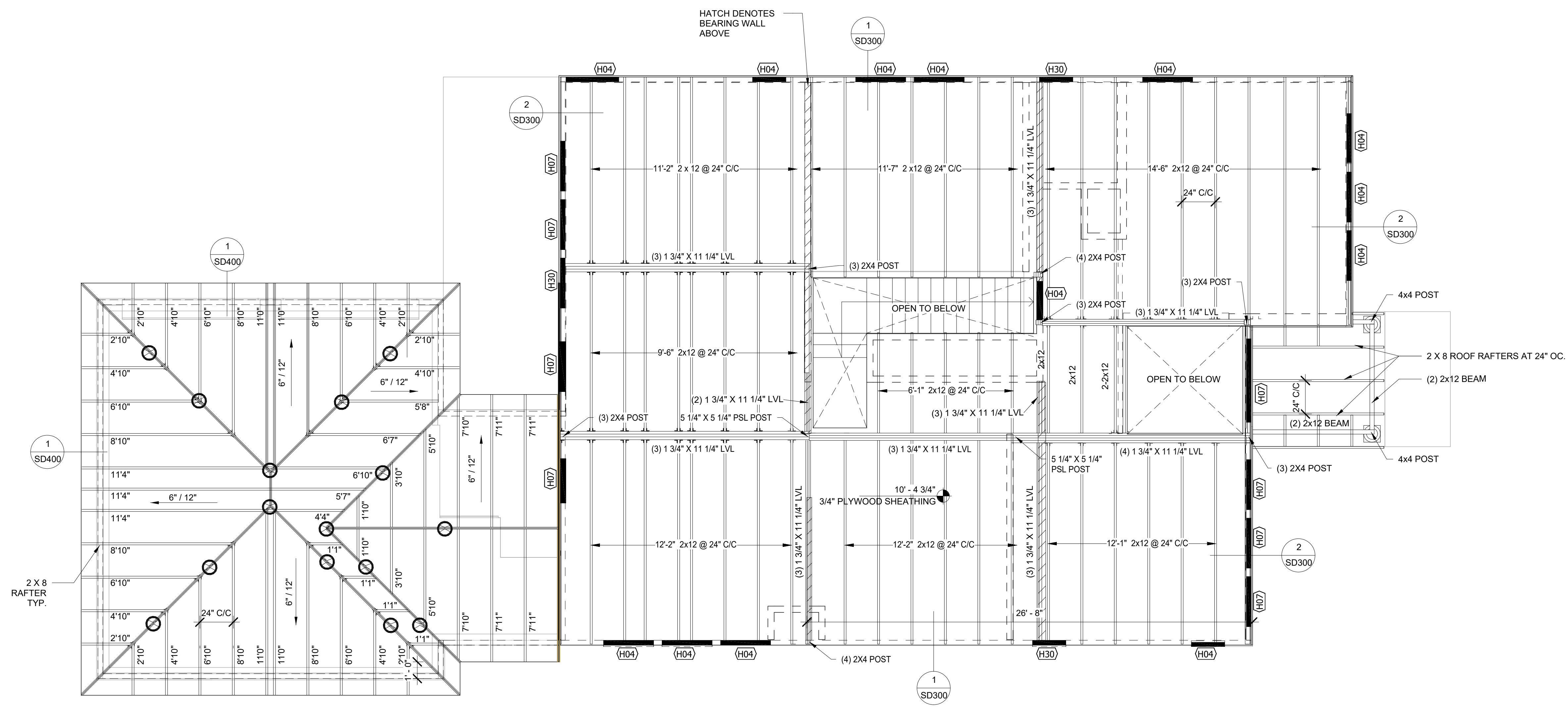
** HEADER MUST BE DOUGLAS FIR-LARCH #2 OR BETTER

NAIL JACK STUDS AND FULL STRENGTH STUDS TOGETHER WITH 10d's STAGGERED AT 12" O.C. EACH PLY.

ALL HEADER SHALL BE NAILED TO JACK STUDS W/2 12d TOE NAILS AND (3) 16d TOE NAILS TO KING STUDS

HEADER SCHEDULE

MARK	'A'	'B'	'C'	'D'	'E'	'F'	'G'
	# PLYS	HDR. SIZE	# JACK STUDS EA. END	# FULL LENGTH STUDS EA. END	# HDR. STRAP EA. END	# HDR. STRAP EA. END	# HDR. STRAP EA. END
H04	2	2x6	1	1	--	--	--
H07	2	2x8	1	1	--	--	--
H21	2	2x10	2	1	--	--	--
H30	2	2x12	2	1	LSTA12	2	2
H36	2	1-3/4"x11-7/8" LVL	2	1	LSTA24	2	2
H35	2	1-3/4"x9-1/4" LVL	2	1	LSTA12	2	2
H37	2	1-3/4"x14" LVL	2	1	LSTA12	2	2
H38	2	1-3/4"x18" LVL	2	1	LSTA12	2	2



1 SECOND FLOOR FRAMNG PLAN
1/4" = 1'-0"